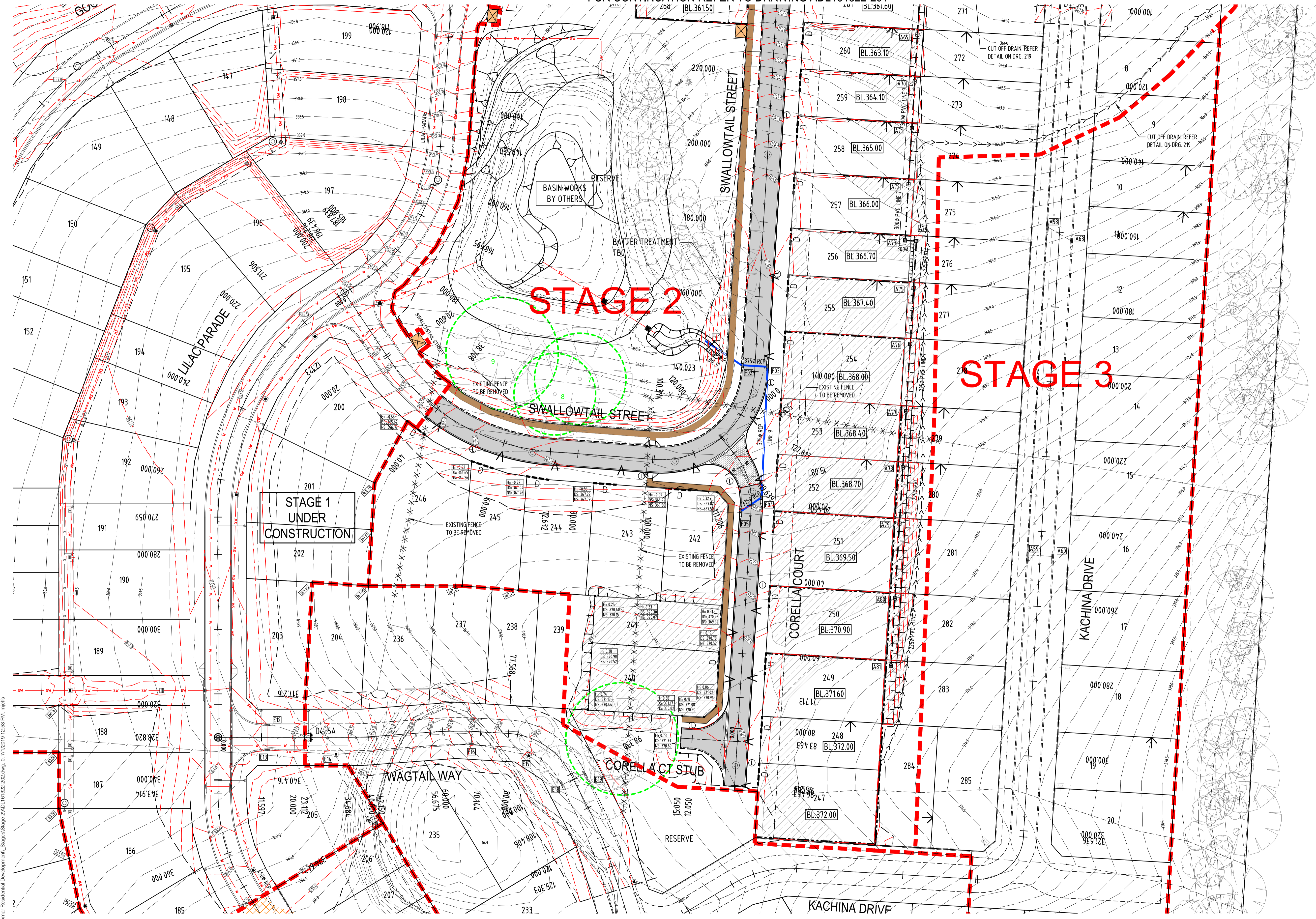


FOR CONTINUATION REFER TO DRAWING ADL161322-201



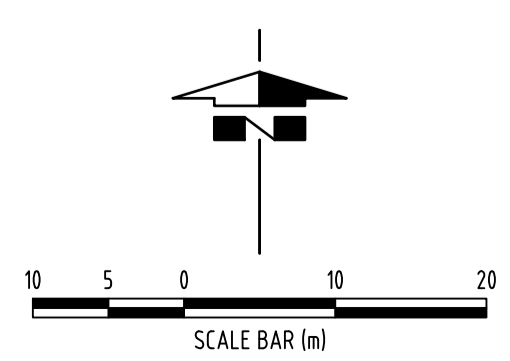
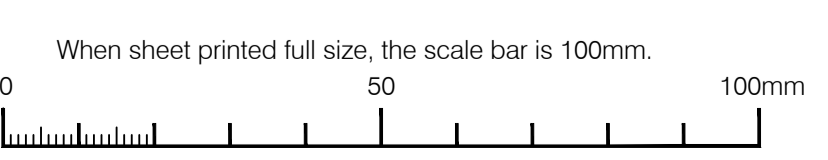
LEGEND:

- 337.0 --- EXISTING CONTOURS
- 0.25 --- DESIGN CONTOURS (250mm INTERVALS)
- 0.50 --- CUT-FILL DEPTH (H)
- 0.50 --- DESIGN SURFACE LEVEL (DS)
- 0.50 --- NATURAL SURFACE LEVEL (NS)
- 0.50 --- DESIGN LEVELS
- 0.50 --- G - GRATE INLET
- 0.50 --- IL - INVERT
- 0.50 --- LOT BENCH LEVEL
- 0.50 --- DESIGN SURFACE LEVEL
- 0.50 --- STORMWATER PIPE - RCP PIPE
- 0.50 --- STORMWATER PIPE - UPVC PIPE
- 0.50 --- FUTURE STORMWATER PIPE
- 0.50 --- STORMWATER DRAINAGE PIT NUMBER
- 0.50 --- MOUNTABLE KERB AND CHANNEL
- 0.50 --- MOUNTABLE KERB ONLY
- 0.50 --- MOUNTABLE KERB AND TRAY
- 0.50 --- BARRIER KERB AND CHANNEL (150 HIGH)
- 0.50 --- BARRIER KERB AND TRAY (150 HIGH)
- 0.50 --- BARRIER KERB ONLY (150 HIGH)
- 0.50 --- BARRIER KERB ONLY (100 HIGH)
- 0.50 --- MEDIAN KERB
- 0.50 --- EDGE KERB
- 0.50 --- SPOON DRAIN
- 0.50 --- CONCRETE PATH WITH KERB RAMP
- 0.50 --- SIDE ENTRY PIT (SEP)
- 0.50 --- JUNCTION BOX (JB)
- 0.50 --- GRATED INLET PIT (GIP)
- 0.50 --- FIELD GULLY (FG)
- 0.50 --- GROSS POLLUTANT TRAP (ROCLA CDS)
- 0.50 --- ALLOTMENT STORMWATER CONNECTION
- 0.50 --- STORMWATER INSPECTION OPENING
- 0.50 --- DRAINAGE OUTLET KERB INSERT
- 0.50 --- SLEEPER RETAINING WALL
- 0.50 --- ROCK PITCHING
- 0.50 --- TREE TO BE REMOVED
- 0.50 --- TREE WITH TREE PROTECTION ZONE
- 0.50 --- EXISTING TREE NUMBERS
- 0.50 --- TRANSFORMER/SWITCHING CUBICLE EASEMENT
- 0.50 --- OBSTRUCTION MARKER MOUNTED IN 4 GALLON DRUMS FILLED WITH SAND
- 0.50 --- TREE PIT. REFER DETAIL ON DRG 219
- 0.50 --- A.C. PAVEMENT TYPE 1
- 0.50 --- A.C. PAVEMENT TYPE 2
- 0.50 --- A.C. PAVEMENT TYPE 3
- 0.50 --- BLOCK PAVING
- 0.50 --- LEVEL 1 CONTROLLED FILL
- 0.50 --- LANDSCAPING

NOTES:

- ALL DRAWINGS TO BE READ IN CONJUNCTION WITH THE LANDSCAPE ARCHITECTS DRAWINGS, OTHER CONSULTANTS DRAWINGS & THE SPECIFICATION.
- ALL UPVC STORMWATER PIPES ARE TO BE SEWER CLASS 'SN' UNO.
- ALL RCP STORMWATER PIPES ARE TO BE CLASS '2' WITH BEDDING TYPE 'HS2' UNO.
- ALL EXISTING SERVICES ARE TO BE LOCATED BY THE CONTRACTOR PRIOR TO COMMENCEMENT OF WORK AT CONTRACTORS COST.
- ALL ROAD BATTERS IN ALLOTMENTS TO BE LEVEL 1 CONTROL FILL.

1/20/16/161322-161400/161322 - Flaxley Residential Development - Stages Stage 2 ADL161322-202.dwg, 6/7/2019 12:03 PM, mjrls



FOR APPROVAL
NOT FOR CONSTRUCTION

REV.	DATE	DESCRIPTION	DRAFT	ENG.	CHKD
A	13.09.18	PRELIMINARY ISSUE	MJ	SA	
B	27.09.18	COUNCIL APPROVAL	MJ	SA	
C	27.11.18	RE-ISSUED FOR COUNCIL APPROVAL	MJ	SA	SA
D	13.12.18	REVISIONS AS CLOUDED	MJ	SA	
0	7.01.19	ISSUED FOR CONSTRUCTION	MJ	SA	SA

WGA
WALLBRIDGE GILBERT
AZTEC
60 Wyatt Street, Adelaide
South Australia 5000
Telephone 08 8223 7433
Email adelaide@wga.com.au

CLOVER PARK - STAGE 2
FLAXLEY ROAD, MOUNT BARKER
FOR LANSER COMMUNITIES
ROADS & STORMWATER PLAN 2/2

A1 DRAWING NUMBER
Job Number Sheet No. Rev.
Design MWRJ Drawn MWRJ
ADL161322 202