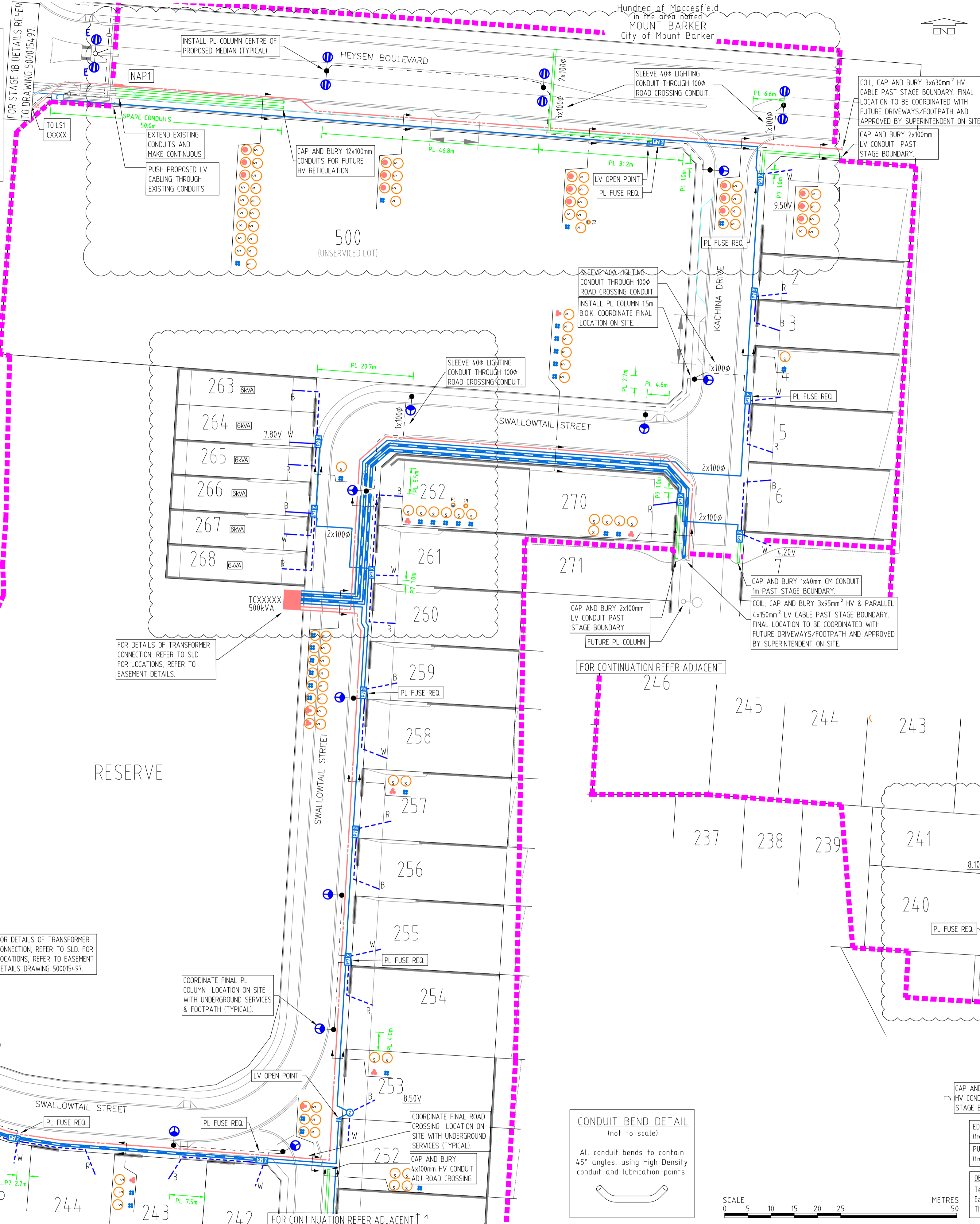
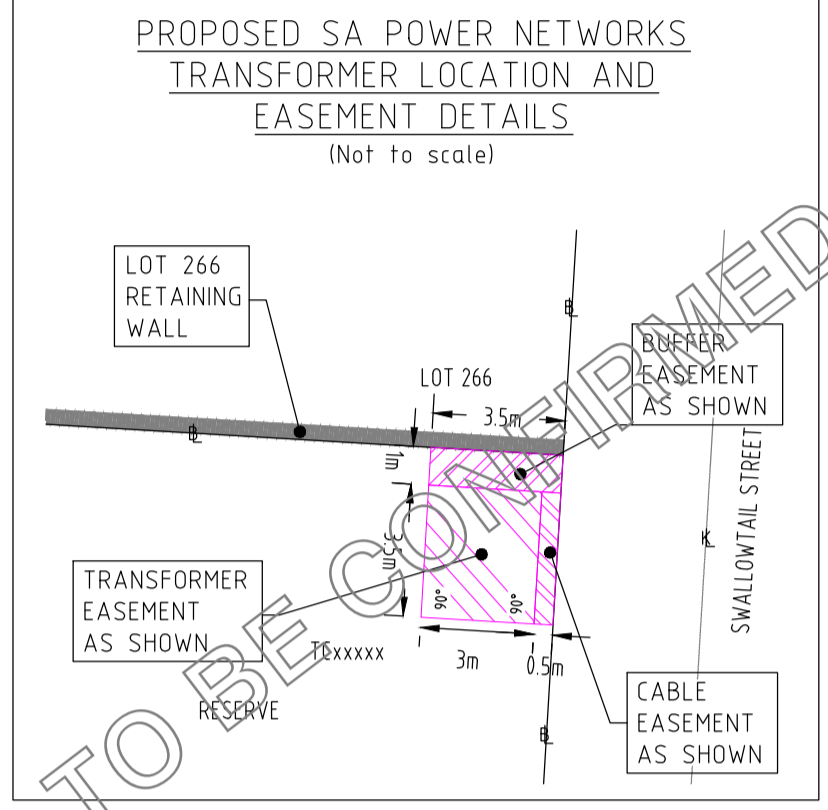


THIS DRAWING TO BE READ IN CONJUNCTION WITH THE FOLLOWING SA POWER NETWORKS TECHNICAL STANDARDS

- TS-085 Trenching and Conduit Standard for Underground Distribution Cable Networks
- TS-087 Construction Standard for Underground Cable Networks
- TS-099 Distribution and Sub-Transmission CAD Drafting Standards
- TS-100 Electrical Design Standard for Underground Distribution Cable Networks
- TS-101 Public Lighting - Design and Installation
- TS-102 Easement Standard for Distribution Networks
- TS-105 Testing for Underground & Overhead Distribution Powerlines up to and including 33kV Networks
- TS-107 Overhead Line Design Standard for Transmission & Distribution Systems
- TS-108 Technical Standard for Distribution Equipment and Transformer Rooms
- TS-109 Earthing of the Distribution Network
- NICC-400 Information for an Applicant Undertaking a Contestable Extension
- NICC-404 Working in the Vicinity of SA Power Networks Infrastructure - Network Access Permit Process
- NICC-802 11kV & 7.6kV to Low Voltage M&T Padmount Transformers Information & Requirements for Customers/Contractors

Visit SA Power Networks web site for the current version of the Technical Standards



| LEGEND | |
|--------|--|
| | PROPOSED 3x630mm ² 11kV XLPE CABLE (CK60399) |
| | PROPOSED 3x95mm ² 11kV XLPE CABLE (CK60601) |
| | EXISTING 3x630mm ² 11kV XLPE CABLE |
| | EXISTING 3x95mm ² 11kV XLPE CABLE |
| | PROPOSED PARALLEL 150mm ² LV UBC XLPE CABLE (CK5310) |
| | PROPOSED 150mm ² LV UBC XLPE CABLE (CK5310) |
| | EXISTING PARALLEL 150mm ² LV UBC XLPE CABLE |
| | EXISTING 150mm ² LV UBC XLPE CABLE |
| | PROPOSED PUBLIC LIGHTING CABLE 6mm ² TWIN & 6mm ² EARTH IN 40mm CONDUIT |
| | PROPOSED 40mm HD ORANGE ELECTRICAL CONDUIT & DRAW ROPE FOR CONSUMERS MAIN TO S/AS/NS 3000 DEPTH 800mm. REFER TYPICAL CST CROSS SECTION & STANDARD SA POWER NETWORKS SERVICE PIT LOCATION ARRANGEMENT |
| | PROPOSED LV UNDERGROUND OPEN POINT |
| | PROPOSED SPARE CONDUITS |
| | EXISTING SPARE CONDUITS |
| | LV/HV CABLES CAPPED IN CABLE PIT E1926/E1979 |
| | PROPOSED UNFUSED LV JUNCTION PIT |
| | PROPOSED FUSED RADIAL PILLAR |
| | PROPOSED FUSED LOOP PILLAR |
| | PROPOSED FUSED-T/OFF PILLAR |
| | PROPOSED PADMOUNT TRANSFORMER |
| | EXISTING PADMOUNT TRANSFORMER |
| | 17W AEROSCREEN LED, 4000K, BLACK FINISH (EM4004) MOUNTED ON BLACK 6.5m MODERN COLUMN WITH 15m DECORATIVE MODERN OUTREACH (WA4017) |
| | 80W LED, 4000K, BLACK FINISH (EM4117), MOUNTED ON BLACK 9.0m IMPACT ABSORBING COLUMN (WA4113) WITH SINGLE 3.0m MODERN OUTREACH (WA4530) |
| | 80W LED, 4000K, BLACK FINISH (EM4117), MOUNTED ON BLACK 9.0m IMPACT ABSORBING COLUMN (WA4113) WITH DOUBLE 3.0m MODERN OUTREACH (WA4530) |
| | EXISTING LED LUMINAIRE |

WGA
WALLBRIDGE GILBERT
AZTEC

AS1518.11.2005 & AS1518.3.12005
ROAD CATEGORY

- HEYSEN BLVD V5
- ALL OTHER ROADS P4

DATE: 18/09/2018
NAME: L. Lukanov (TechES)

REFER SHEET 2 FOR NOTES

SCOPE OF WORKS

CONTESTABLE WORKS
Electrical Contractor to:

- Undertake all new work within development.
- Provide completed TS-105 C1 & C2 forms.
- Provide 'As Constructed' drawings to SA Power Networks Network Management group at no charge.
- Provide documented results proving condition of the existing assets to NPO prior commencing works on any existing infrastructure.
 - megger and phase ID all cables
 - megger all screens and carry out core to screen/earth test for all HV cables
 - contact NPO for direction if any faults discovered.

NAP 1

- Supply & install 3x630mm² HV cable straight joints located adj. lot 500 Heysen Boulevard.

NAP 2

- Push 3x95mm² HV cables through existing conduit into vault of TCXXXXX reserve app lot 200 Swallowtail Street, cap for termination by SA Power Networks.
- Push parallel 4x150mm² LV cables through existing conduit into vault of TCXXXXX reserve app lot 200 Swallowtail Street, cap for termination by SA Power Networks.

Developer Civil Contractor to:

- Comply with requirements of NICC-404, TS105-C1 & C2 when working in the vicinity of the electricity network.

NON CONTESTABLE WORKS
SA Power Networks to:

- Terminate 3x95mm² HV cables to LS2 TCXXXXX reserve app lot 200 Swallowtail Street.
- Terminate parallel 4x150mm² LV cables to FSD4 TCXXXXX reserve app lot 200 Swallowtail Street.
- Public lighting to be energised by SA Power Networks.
- SA Power Networks to carry out testing, connection and energising of the development.

PRELIMINARY ISSUE
NOT TO BE USED FOR CONSTRUCTION
29 November 2018

| ADMD TABLE | | |
|------------|-------|-------------|
| | Total | Lot Numbers |
| 6kVA | 6 | 263 to 268 |
| 8kVA | 30 | All others |

THIS DRAWING TO BE READ IN CONJUNCTION WITH DRAWING 500018690 SHEET 2

WGA
WALLBRIDGE GILBERT
AZTEC

60 Wyatt Street, Adelaide
South Australia 5000
Telephone 08 8223 7433
Email adelaide@wga.com.au

ZONE MGA-54-GDA94
MAP REF: 6627-07-q
GRID REF: 303672.70 E
6114994.00 N

HFBRA HIGH BUSHFIRE RISK AREA
FEEDER NO: MTB-14
FEEDER NAME: FLAXLEY 11kV
SUBSTATION NO: SSD-777
ASSET OWNER: SA POWER NETWORKS
PROJECT DEFINITION: NOTIFICATION TYPE: PROJECT TYPE: XX-000000 CN RD

303446.30 E
6114670.30 N

PRELIMINARY

| REV | DETAILS OF REVISION | RVD | CKD | APD | DATE | REV | DETAILS OF REVISION | RVD | CKD | APD | DATE | REV | DETAILS OF REVISION | RVD | CKD | APD | DATE |
|-----|--|-----|-----|-----|----------|-----|---------------------|-----|-----|-----|------|-----|---------------------|-----|-----|-----|------|
| B | PRELIMINARY ISSUE - LOT LAYOUT UPDATED | | | | 29.11.18 | | | | | | | | | | | | |
| A | PRELIMINARY ISSUE | | | | 21.09.18 | | | | | | | | | | | | |

| | | | |
|-----------------|--|----------|--|
| DRAWN | L. KLEING | 19-09-18 | Head Office: 1 Anzac Highway Keswick South Australia 5035 |
| DESIGNED | L. LUKANOV | 18-09-18 | Postal address: GPO Box 77 Adelaide South Australia 5001 |
| CHECKED | A. IAROSSE | 21-09-18 | |
| PROJECT MANAGER | R. GEUE MT BARKER (08) 8391 7721 | | Corporate switchboard 08 8404 5667 19:00am - 5:00pm Monday to Friday) |

SA Power Networks
www.sapowernetworks.com.au

CLOVER PARK - STAGE 2 - MT BARKER
PROPOSED UNDERGROUND RESIDENTIAL DEVELOPMENT
DEV. No. 580/D030/15

| SCALE | 1:500 | A1 | 500018690 | SHEET 1 OF 2 | REV B |
|-------|-------|----|-----------|--------------|-------|
|-------|-------|----|-----------|--------------|-------|